

# MultiControl Marine/RV

## Launch in the Recreational Vehicles Market






Webasto Thermo & Comfort SE

Product Management

SOE&AM Leisure

Gilching, January 2015

# Kit Contents

| Description  | Quantity  | Picture   |
|--|-----------|---|
| <b>Control device MultiControl</b>   | <b>1</b>  |    |
| <b>Adhesive pad</b>  | <b>2</b>  |    |
| <b>Quick Start Guide</b><br><br><b>Separate detachable folding leafs</b><br><b>languages: DE, GB, FR, IT, ES, DK, FI, NO, SE, CZ, PL, SK, RU, CN</b> | <b>14</b> |   |
| <b>DVD with complete operation- and installation instructions</b><br><b>languages: DE, GB, FR, IT, ES, DK, FI, NO, SE, CZ, PL, SK, RU, CN</b>        | <b>1</b>  |  |

# Special Features & Benefits Marine/RV Versions

## ■ **Easy Plug'n'Play**

One MultiControl version with pre-selection of Air Top settings and one version with pre-selection of Thermo Top settings.

⇒ No additional heater selection or set up necessary when connecting the MultiControl to the heater for the first time. Also, no additional wiring is necessary for the operation.

## ■ **No time limitation of heating/ventilation**

Continuous heating/ventilation is set as standard in both MultiControl versions. In case the customer still wants a limitation, it can be changed in the settings.

⇒ The customer starts the heater (and selects the temperature) and does not have to worry that the heater stops after a certain amount of time.

## ■ **21 activated timers**

Programming of three different settings for seven days in advance. All 21 settings can be activated at the same time.

⇒ The customer sets the timer once and gets the desired heating comfort for a complete week.

# General Features & Benefits

- **Instant start button**  
Enables heating or ventilating with a simple fingertip. Time in service, temperature and heating mode can be pre-adjusted.
- **Comfortable control concept**  
The self-explanatory user menu allows easy setting and configurations. This fast and intuitional operation is supported by the TFT-Display and the multifunction button.
- **Operation indicator**  
In addition to the display a LED within the instant start button shows the different modes of operation. The actual mode is visible even when the display is switched off to save energy.
- **7-days-autotimer**  
Programming and activation of 3 different settings for 7 days in advance. All programmed and activated start-stop times can be seen in the overview function.
- **Comfort function**  
The MultiControl supports the comfort functions (Boost, Eco, Normal) for fast and energy efficient heating with the Air Top Evo 40/55 and Air Top 2000 STC range.
- **Individual configuration (service menu)**  
The service menu allows additional pre-settings (e.g. adjustable range of temperature, showing the actual temperature) by the control to guarantee the best match for typical consumer applications.

- **Onboard diagnosis plug**  
All MultiControls contain an integrated interface for diagnosis and configuration of the control panel as well as the connected heater via the Webasto Diagnosis System (WTT).
- **Integrated temperature sensor**  
To monitor the control devices system a temperature sensor is integrated into the MultiControl. Mainly this sensor secures the device from damage but it can also be used to show the actual temperature on the display. It is adjusted via the service menu. *In case an external temperature sensor is connected, the integrated temperature sensor is overruled.*
- **Flexible plain cable conductor**  
Using a plain connector cable and allowing to bend the cable up to 80° behind the body, enables a fast and easy installation.
- **ECE-R21**  
The MultiControl devices fulfill the technical order ECE-R21 for usage in the interior equipment of motor vehicles (class of vehicles M1). The special design fulfills all the high requirements for passenger security. Because of that the device can be installed in the head impact zone\*
- **Compatibility to other Webasto control devices**  
A synchronous installation and operation of MultiControl with Thermo Call TC3 and T91 Holiday is possible.

\*The head impact zone includes all the fronts which aren't made of glass and can statistically be touched by a spherical head with a diameter of 165 mm.

# Control Panel Overview



- ① Display
- ② Status LED

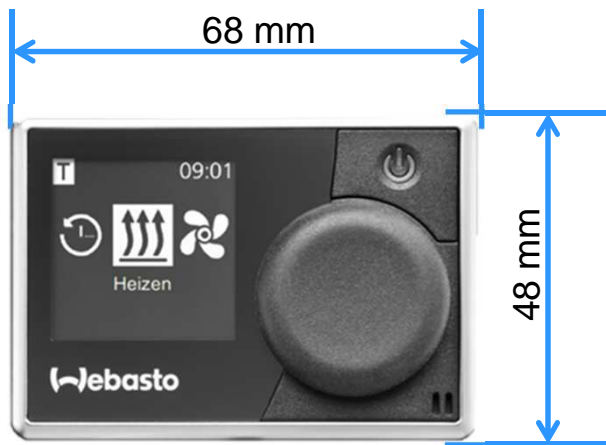
| Status                      | LED   |           |
|-----------------------------|-------|-----------|
| ON (operability)            | White | Permanent |
| Heating                     | Green | Permanent |
| Ventilating                 | Blue  | Permanent |
| Activated timer Heating     | Green | Flashing  |
| Activated timer Ventilating | Blue  | Flashing  |
| Error                       | Red   | Flashing  |



Rear View

- ③ Instant start button
- ④ Temperature sensor
- ⑤ Logo
- ⑥ Control button
- ⑦ Connecting lead
- ⑧ Diagnosis plug

# Technical Data



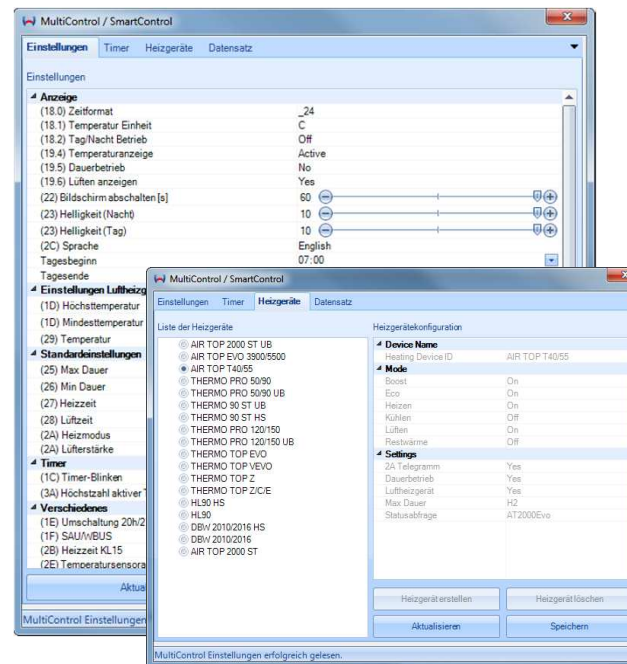
## Technical Data MultiControl

|   |                         |
|---|-------------------------|
| <b>Dimensions [mm]</b><br>(length/depth/height)                           | 68 x 15* x 48           |
| <b>Nominal voltage [V]</b>  | 12 - 24                 |
| <b>Max current consumption [mA]</b>                                       | 0.5 (Standby)           |
| <b>Max current consumption [mA]</b><br>(operation without external relay) | 17 to 23<br>(operating) |
| <b>Weight [g]</b>   | 41                      |
| <b>Approved operating temperature [°C]</b>                                | -40 to +75              |
| <b>Storage temperature [°C]</b>   | -40 to +90              |

\*Case depth without control button: 9,5mm

# Webasto Thermo Test (WTT) Connection

- The WTT (from version 3.0) allows a fast and easy parametrization of the panel
- All functions are visible at a glance and can be adjusted to consumer wishes
- Individual datasets can be saved and used to parameterize other MultiControls
- Diagnosis cable 9029674B needed





# Compatibility with Webasto Heaters

|  | MultiControl<br>MAR/RV Thermo Top | MultiControl<br>MAR/RV Air Top |
|--|-----------------------------------|--------------------------------|
| <b>Water heaters</b>                       |                                   |                                |
| Thermo Top Z/E/C                           | ●                                 |                                |
| Thermo S230/S300/S350/S400                 | ●                                 |                                |
| Thermo 230/300/350                         | ●                                 |                                |
| Thermo Pro 50 / Thermo Pro 90 <sup>1</sup> | ●                                 |                                |
| Thermo 90 ST                               | ●                                 |                                |
| DBW 2010/2016                              | ●                                 |                                |
|  |                                   |                                |
| <b>Air heaters</b>                         |                                   |                                |
| Air Top Evo 40/55                          |                                   | ●                              |
| Air Top 2000 STC <sup>2</sup>              |                                   | ●                              |

<sup>1</sup>W-Bus-Implementation Thermo Pro 50/90 04/2015

<sup>2</sup>W-Bus-Implementation Air Top 2000 STC 04/2015

# Compatibility with Air Top Evo 40/55

## Please note:

Heaters sold **before January 2015** do not have the full W-bus compatibility

⇒ They **cannot** be operated by the MultiControl



### NOT MultiControl compatible

Part no. Heater Description

**9027521A** HG Air Top Evo 40 D 12V without DP-cable

**9027523B** HG Air Top Evo 55 D 12V without DP-cable

### MultiControl compatible

Part no. Heater Description

**9027521B** HG Air Top Evo 40 D 12V without DP-cable

**9027523C** HG Air Top Evo 55 D 12V without DP-cable

# Connection to Webasto Heaters

## Please note for the Air Top Evo 40/55 connection:

The MultiControl panel communicates via W-bus and therefore needs to be connected to the **diagnosis** cable at the heater's wiring harness.



## Please note for the Thermo Top C Motorcaravan connection:

The MultiControl panel is connected to the same connectors as the former digital timer 1530 **BUT** the black loose cable is not being connected any more since the continuous heating mode is set as standard. Preheating the engine is not time limited any more either.



# MultiControl Accessories

| Ident Number | Description                   | G1 Price |
|--------------|-------------------------------|----------|
| 9029674B     | CABLE DIAGNOSTIC MULTICONTROL | 15,51€   |



The diagnosis cable is needed to activate the service-menu of the control panel. The adapter (left) can be connected to the wiring harness of the USB-Diagnosis adapter (ID9009064F) to change/set the control device parameters with the Webasto Thermo Test.

# MultiControl Accessories

| Ident Number | Description              | G1 Price |
|--------------|--------------------------|----------|
| 9030077A     | BAG BRACKET MULTICONTROL | 9,10€    |



The mounting frame is fixed with two screws (included) to the desired place.  
The control device is simply clicked into the frame.