



# BRIEF INFORMATION

## Luminator Xenon Auxiliary Spotlight



With external ballast

### CONTENTS OF PACKAGE

- Xenon spotlight
- Integrated D1S gas discharge lamp
- Xenon ballast
- Attachment material
- Attachment material
- Mounting instructions

### PRODUCT FEATURES

- Due to its impressive external dimensions, it is particularly suitable for trucks, large pick-ups and off-road vehicles.
- Xenon spotlight in black with red design ring including D1S gas discharge lamp and external ballast.
- ECE type-approved high beam for 12 and 24 V vehicle systems (E) 2554
- Ø 22 cm
- Weight: 3,800 g

Spotlight, 12 V (ECE Ref. 37.5)	<b>1F8 007 560-621</b>
Spotlight, 24 V (ECE Ref. 37.5)	<b>1F8 007 560-631</b>

### ACCESSORIES

Protective cap*	<b>8XS 147 945-021</b>
-----------------	------------------------

\* Protective caps are not legally authorised in some countries. Before using them on public roads, please check with the relevant government agency.

## RANGE OVERVIEW



### Luminator Compact Xenon – Ø 17 cm

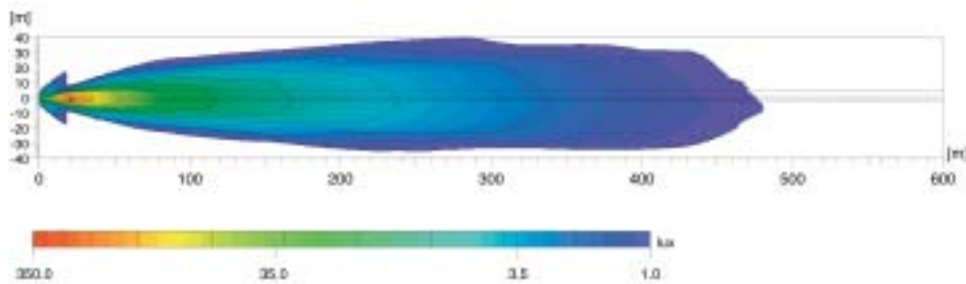
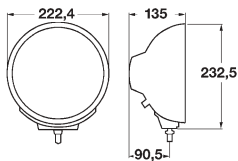
Xenon spotlight in black with D1S gas discharge lamp and external 12 V ballast. ECE type-approved (E) 2087 high beam for 12 V vehicle systems. The strong, white light is now also available in a compact version. Long-range, intensive and almost as bright as daylight. Weight: 2,400 g.

Spotlight, 12 V (ECE Ref. 37.5)

1F3 009 094-142

## LIGHT DISTRIBUTION

ECE Ref. 37.5



Mounted: upright

### Lux is the unit of illuminance.

It expresses the luminous flux from the light source that impinges on a specific area. For example, an office should be illuminated with at least 500 lux, and the human eye can still read a newspaper without any problems at 1 lux. The values underneath the lux axis show at which point of the light distribution diagram the corresponding illumination intensity is reached.

### Ref. 50, 40, 37.5, 17.5 and 12.5:

The reference number (Ref.) is a figure that applies to a spotlight. Under ECE regulations, this reference number may not exceed the upper limit of 100 per vehicle. This figure includes the values for the two standard high beams (left and right headlights) plus those of any other installed spotlights. The appropriate value is engraved on the lens of each approved headlight.



### See the light!

Auxiliary lights from HELLA. The right light for every application. Try them out online now!

[www.hella.com/lightshow](http://www.hella.com/lightshow) [www.hella.com/truck](http://www.hella.com/truck) [www.hella.com/offroad](http://www.hella.com/offroad) [www.hella.com/eliver](http://www.hella.com/eliver)